

# WiebeTech

by CRU

## Logical Imaging: The Future of Data Acquisition



# The future of data acquisition



Managing and collecting data has long been a requirement for digital investigators, but recently other organizations have adopted forensically sound data capture to maintain records and limit liability.

Forensically sound data capture works like this: image or clone a drive in such a way that the drive's data is demonstrably unaltered. To achieve this level of reliability, digital investigators have turned to CRU's WiebeTech® line of digital forensic drive docks, write blockers, and drive imagers.



# Introducing Ditto DX

Our new WiebeTech Ditto® DX Forensic FieldStation for physical and Logical Imaging, optimized data acquisition, and working with local and networked data from all sources.

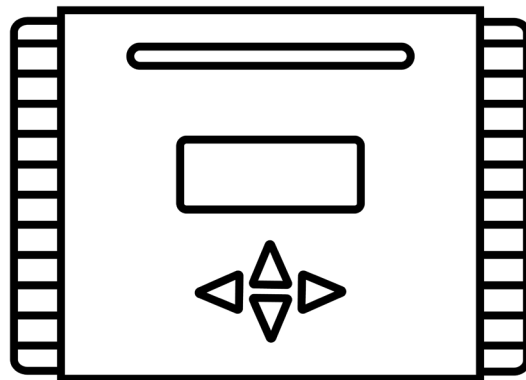
In this booklet we'll go over the future of digital forensic investigation and how Ditto DX incredible performance, design, and Logical Imaging capabilities will dramatically improve data acquisition and e-discovery.



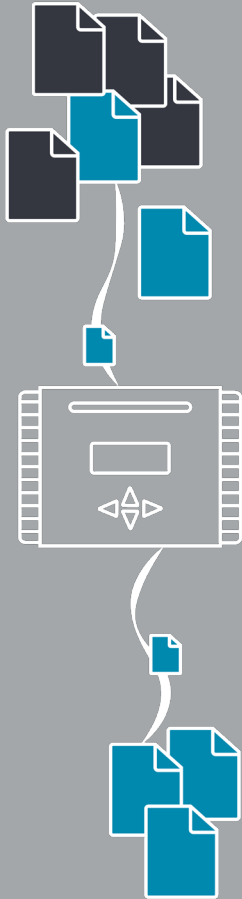


# The Ditto Family

Ditto DX improves upon the original Ditto's performance and user interface while retaining the capabilities and features our customers rely on.



The portable, powerful Ditto family of forensic imagers can be used locally or remotely via the internet to acquire data from network shares and hard drives. Cloning or imaging that data to your choice of hard drive or network share, complete with customizable XML logs, helps you maintain your chain of custody while using write blocked methods. Its browser-based configuration, administration, and operation make cross-platform data preview, triage, and logical imaging efficient, easy-to-use tasks. Ditto and Ditto DX are true network-enabled investigation and eDiscovery tools for law enforcement and military agencies, as well as for corporate usage in HR, fraud, criminal, and security investigations.



As drive sizes grow to 8TB and beyond, it's becoming far too inefficient to image an entire drive. The hours and effort required to image 8 TB can be better served elsewhere. With Logical Imaging you acquire only relevant data. Instead of collecting everything and then sorting through the data necessary to your investigation, Logical Imaging allows you to select from

## Logical Imaging in an 8 TB world

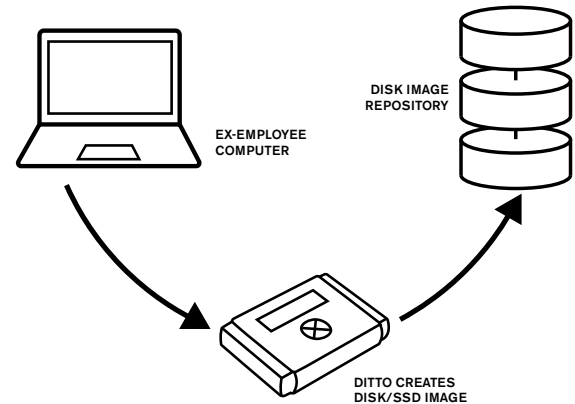
preloaded search terms such as "all media files" or "all files excluding the OS." Additionally, you can easily create your own custom search criteria.

# x2

Ditto DX doubles the speed of Logical Imaging, as well as doubling the speed of physical imaging from SSD to SSD.

# Ditto for internal investigations

Ditto has been used by companies as a low-cost solution for creating images of ex-employee drives. By creating a forensically sound image of a former employee's hard drive, businesses can ensure that no data is lost, and at the same time collect data in such a way that should the need arise, the data can be cited as reliable evidence.



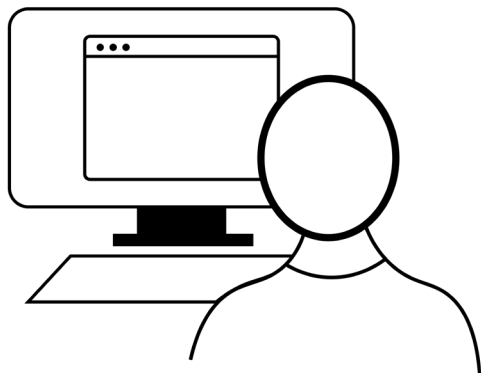
## E-Discovery

One global cybersecurity company with over 3,000 employees has incorporated Ditto in its mission to systematically retain information from departing employees, regardless of the cause of termination. While it may be possible to search backups of employee computers for necessary information, having obtained a forensically sound disk image ensures that the company can attest to the validity of the data presented for examination. The disk image is now available to be searched for e-discovery purposes via any of the popular software packages.



# Digital forensics

With its state of the art write blocking and imaging capabilities, as well as Logical Imaging, Ditto's primary use is in law enforcement and government. Popular with digital investigators for its speed, performance, and size, Ditto is ruggedly built with an all-metal construction. **Ditto is easily operated via a browser interface, meaning that it can be administered in the field remotely,** a feature which our customers love.

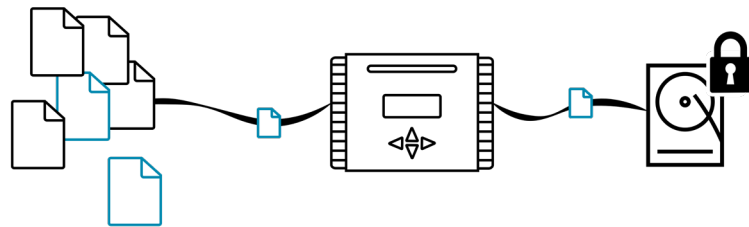


## Lighting the way

Ditto DX improves upon the already stellar reputation of the original Ditto, dramatically improving performance, adding new ports and native USB 3.0, and refining the user interface. **Ditto DX's light bar can be set to show vibrant colors visible across the lab to reflect the status of the action being performed.**



# Ditto DX and storage



Because CRU offers removable and external drive enclosures and digital forensics products, it's in the perfect position to marry data transport and security with forensically sound data capture. By using CRU technology, our customers can ensure the data they collect remains secure.

## Digital forensics meets storage

In addition to making digital forensics write blockers, drive docks, and drive imagers, CRU is the industry leader in removable drives for data transport and security. Many of our forensic customers use CRU storage to secure the data they collect. Many of **our removable drives can be configured with AES 256-bit encryption** – military-grade – meaning the disk images created with Ditto and Ditto DX can be locked down and protected from prying eyes.



# We'd love to hear from you.

Find out more about Ditto and Ditto DX at  
**[cru-inc.com/ditto](http://cru-inc.com/ditto)**

Or contact us at **[sales@cru-inc.com](mailto:sales@cru-inc.com)** or by calling  
**1-800-260-9800 / 1-360-816-1741**

You can also follow us on social media for updates, tips, and news:



**@cruinc**



**@cru\_inc**



**cru-inc**



**We hope you've found this booklet  
useful, and we look forward to hearing  
from you.**



**Protecting  
Your Data™**

©2018, 2016 by CRU Acquisition Group, LLC. CRU, Ditto, and WiebeTech are registered trademarks of CRU Acquisition Group, LLC.

For more information,  
visit the CRU web site.

**[cru-inc.com/forensics](http://cru-inc.com/forensics)  
[sales@cru-inc.com](mailto:sales@cru-inc.com)**