

TECHNICAL SUPPORT

Your investment in CRU products is backed up by our free technical support for the lifetime of the product. Contact us through our website, cru-inc.com/support or call us at 1-800-260-9800 or 1-360-816-1800.

PRODUCT WARRANTY

CRU warrants this product to be free of significant defects in material and workmanship for a period of 2 years from the original date of purchase. CRU's warranty is nontransferable and is limited to the original purchaser.

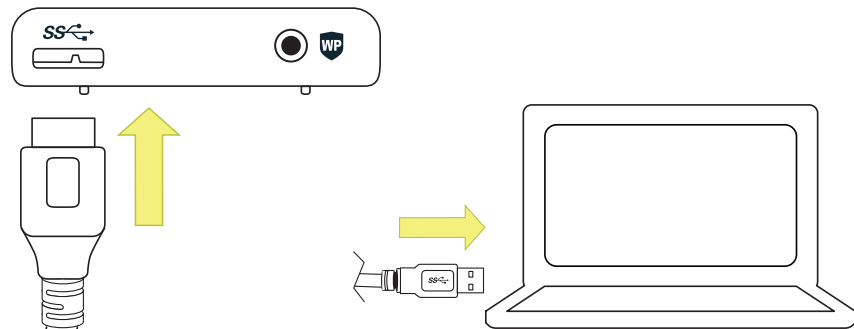
ToughTech is a registered trademark and CRU is a trademark of CRU Acquisition Group, LLC.

©2013 CRU Acquisition Group, LLC. All rights reserved.

For the full user manual and more information, see www.cru-inc.com.

A9-000-0036-1 Rev. 1.0

Operating Your ToughTech m3

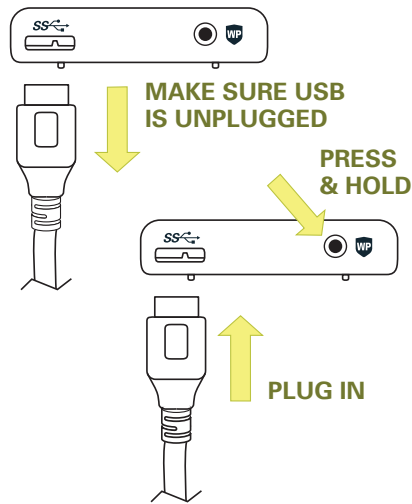



**LED COLOR DEPENDS ON MODE.
LED BLINKS WHEN DISK IS IN USE.**

 **READ/WRITE MODE**

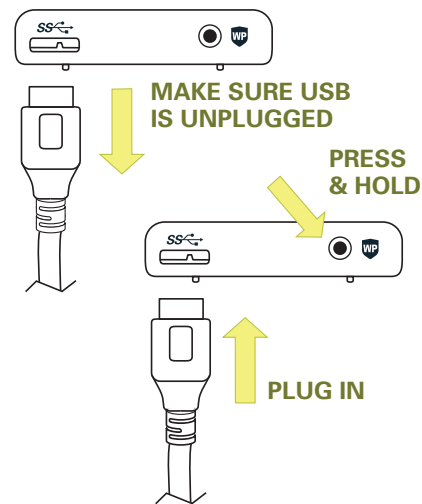
 **WRITE PROTECT
(READ-ONLY MODE)**

Entering WriteProtect Mode



 **LED TURNS YELLOW**

Returning to Normal Read/Write Mode



 **LED TURNS GREEN**



Protecting Your Digital Assets™



TOUGHTech
m3

QUICK START GUIDE

Thank you...

...for purchasing the CRU™ Tough-Tech® m3 enclosure, a sturdy aluminum case for your 2.5-inch hard drive or SSD. The ToughTech m3 is powered by your PC or Mac and provides fast USB 3.0 access to your backup, photos, videos, music—your data.

Our unique WriteProtect feature prevents data from being deleted accidentally—and keeps viruses and unwanted data off your drive.

Because it is portable, your ToughTech m3 enclosure also has a Kensington slot to use with a cable lock to prevent theft.

ENJOY.

cru-inc.com/ToughTech-m3

ToughTech. For work on the go.

Hard Drive/SSD Installation

