



## **CRU Removable Drives for Data Security and Transport**

---

FROM CDSG





## CRU Removable Storage Helps People Protect Their Data

CRU provides rugged, removable storage solutions for physically securing and transporting sensitive Data at Rest (DAR). Trusted for decades in military, government, critical infrastructure, and commercial applications, CRU removables are available to meet a variety of security or data transport requirements for:

Secure office and military base environments | Aircraft, naval vessels, military and civilian vehicles | Digital cinema distribution and post-production  
Education, health care, financial services | Data backup and other IT tasks

CRU removable solutions are available in PCIe/NVMe and SAS/SATA interfaces that fit into 9mm ODD, 3.5-inch, and 5.25-inch bays in OEM computers and custom applications. DIGISTOR secure storage SSDs can be factory installed for quality and ease of integration purposes.

## Rugged Removable Drives for PCIe/NVMe Interfaces



### QX448 Enclosure for SHIPS Modules

**Drive Types Supported** PCIe/NVMe

SHIPS Q80 or Q80R module

**Number of SHIPS Drives** 4

**Bay Size** 5.25in

**Insertion Rating** Up to 10,000  
module insertions

**Host (I/O) Ports** NVMe/PCIe

**Lockable Bays** Yes

**Speed** Supports PCIe Gen 3 and Gen 4

### QX328 Enclosure for SHIPS Modules

**Drive Types Supported** PCIe/NVMe

SHIPS Q80 or Q80R module

**Number of SHIPS Drives** 1

**Bay Size** 3.5in (5.25in bay with  
adapter)

**Insertion Rating** Up to 10,000  
module insertions

**Host (I/O) Ports** NVMe/PCIe

**Lockable Bays** Yes

**Speed** Supports PCIe Gen 3 and Gen 4





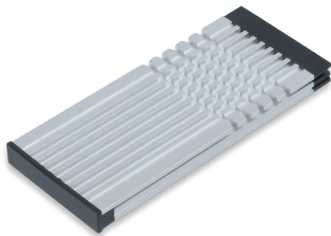


**QX118 Enclosure for SHIPS Modules**

- Drive Types Supported** PCIe/NVMe  
SHIPS Q80 or Q80R module
- Number of SHIPS Drives** 1
- Bay Size** 9mm
- Insertion Rating** Up to 10,000  
module insertions
- Host (I/O) Ports** NVMe/PCIe
- Lockable Bays** Yes
- Speed** Supports PCIe Gen 3 and Gen 4

**QX310 v2 for NVMe SSDs**

- Drive Types Supported**  
DIGISTOR factory-integrated storage options available
- PCIe/NVMe: Qualified M.2 drives (30mm, 42mm, 60mm, 80mm, or 110mm length) or U.2 drives, depending on carrier type
- Number of Bays** 1
- Bay Size** 3.5in (5.25in bay with adapter)
- Insertion Rating** Supports thousands of carrier insertions
- Host (I/O) Ports** NVMe/PCIe
- Lockable Bays** Yes
- Speed** Supports PCIe Gen 3



**SHIPS Q80 Module**

For typical office environments

- Drive Types Supported** PCIe/NVMe  
Gen 3 and Gen 4
- Storage** Up to 8TB
- Insertion Rating** Up to 10,000  
insertions
- Construction material**  
Aluminum chassis
- Dimensions** 4.09in x 1.77in x 0.35in  
(104mm x 45mm x 9mm)
- Weight** 0.11lb (0.05kg)
- Compliance** FCC, UL, CE, RoHS, RCM

**SHIPS Q80R Module**

For military environments

- Drive Types Supported** PCIe/NVMe  
Gen 3 and Gen 4
- Storage** Up to 8TB
- Insertion Rating** Up to 10,000  
insertions
- Construction material(s)**  
Aluminum chassis
- Dimensions** 4.09in x 1.77in x 0.35in  
(104mm x 45mm x 9mm)
- Weight** 0.11lb (0.05 kg)
- Compliance** FCC, UL, CE, RoHS, RCM

# Rugged Removable Drives for SAS/SATA Interfaces



## DX175

**Drive Types Supported**  
SAS/SATA 2.5in drives  
SAS/SATA 3.5in drives  
SATA SSD

**Number of Bays** 1

**Bay Size** 5.25in

**Insertion Rating** up to  
50,000 carrier insertions

**Host (I/O) Ports** (1) SAS/  
SATA: Up to 6 Gbps

**Lockable Bays** Yes

**SATA Speed** 6G

## DX115

**Drive Types Supported**  
SAS/SATA 2.5in drives  
SAS/SATA 3.5in drives  
SATA SSD

**Number of Bays** 1

**Bay Size** 5.25in

**Insertion Rating** Up to  
30,000 carrier insertions

**Host (I/O) Ports** (1) SAS/  
SATA: Up to 6 Gbps

**Lockable Bays** Yes

**SATA Speed** 6G

## DP10

**Drive Types Supported**  
DIGISTOR factory-integrated  
storage options available  
SAS/SATA 2.5in drives  
SAS/SATA 3.5in drives (Note:  
Drives with the Power  
Disable feature are not  
supported)

SATA SSD

**Number of Bays** 1

**Bay Size** 5.25in

**Insertion Rating** Up to  
30,000 carrier insertions

**Host (I/O) Ports** (1) SATA:  
up to 6 Gbps  
SAS (single-port): up to 6  
Gbps

**Lockable Bays** Yes

**SATA Speed** 6G

## DP25

**Drive Types Supported**  
SATA 2.5in drives (1 or 2)  
SATA SSD (1 or 2)

**Number of Bays** 2

**Bay Size** 3.5in

**Insertion Rating** Up to  
30,000 carrier insertions

**Host (I/O) Ports** (2) SATA:  
up to 6 Gbps

**Lockable Bays** Yes

**SATA Speed** 6G

## DP27

**Drive Types Supported**  
DIGISTOR factory-integrated  
storage options available  
SATA 2.5in drives (7mm  
height)  
SATA SSD (solid state drives)  
7mm height

**Number of Bays** 1

**Bay Size** Optical (9.5mm  
height)

**Insertion Rating** Drive  
receiving interface rated  
for up to 50,000 insertions

**Host (I/O) Ports** (1) SATA  
6G Slimline 13-pin device  
connector for data and  
+5VDC power

**Lockable Bays** DP27L  
model only

**SATA Speed** 6G