

ToughTech and WriteLock are trademarks of CRU Acquisitions LLC. Other marks are the property of their respective owners.  
© 2007, 2010 CRU Acquisitions LLC. All rights reserved.

**Product Warranty**

CRU-DataPort (CRU) warrants this product to be free of significant defects in material and workmanship for a period of one year from the original date of purchase. CRU's warranty is nontransferable and is limited to the original purchaser.

**Limitation of Liability**

The warranties set forth in this agreement replace all other warranties. CRU expressly disclaims all other warranties, including but not limited to, the implied warranties of merchantability and fitness for a particular purpose and non-infringement of third-party rights with respect to the documentation and hardware. No CRU dealer, agent, or employee is authorized to make any modification, extension, or addition to this warranty. In no event will CRU or its suppliers be liable for any costs of procurement of substitute products or services, lost profits, loss of information or data, computer malfunction, or any other special, indirect, consequential, or incidental damages arising in any way out of the sale of, use of, or inability to use any CRU product or service, even if CRU has been advised of the possibility of such damages. In no case shall CRU's liability exceed the actual money paid for the products at issue. CRU reserves the right to make modifications and additions to this product without notice or taking on additional liability.

FCC Compliance Statement: "This device complies with Part 15 of the FCC rules. Operation is subject to the following two conditions: (1) This device may not cause harmful interference, and (2) this device must accept any interference received, including interference that may cause undesired operation."

This equipment has been tested and found to comply with the limits for a Class B digital device, pursuant to Part 15 of the FCC Rules. These limits are designed to provide reasonable protection against harmful interference when the equipment is operated in a home or commercial environment. This equipment generates, uses, and can radiate radio frequency energy and, if not installed and used in accordance with the instruction manual, may cause harmful interference to radio communications.

In the event that you experience Radio Frequency Interference, you should take the following steps to resolve the problem:

1. Ensure that the case of your attached drive is grounded.
2. Use a data cable with RFI reducing ferrites on each end.
3. Use a power supply with an RFI reducing ferrite approximately 5 inches from the DC plug.
4. Reorient or relocate the receiving antenna.



## ToughTech™ Q Quick Start Guide

For the full user manual and more information about this product, please visit [www.wiebetech.com/techsupport.php](http://www.wiebetech.com/techsupport.php) or [www.cru-dataport.com](http://www.cru-dataport.com).



**Models Covered:**

- ToughTech Q
- ToughTech Q with WriteLock™
- ToughTech Secure Q
- ToughTech Secure Q with WriteLock

### 1. Installation Steps

#### 1.1 Hard Drive Installation

**NOTE:** These instructions are only necessary if you're installing your own hard drive inside the ToughTech. If you purchased the product with a hard drive pre-installed, you may skip to the next section.

- a. If the rear panel is secured with screws, remove them using a small Phillips screwdriver. (If it is not secured, the screws should be located in the same plastic bag as the hard drive screws.)
- b. Push the bottom panel out of the housing. Adequate pressure must be applied to slide it out.
- c. Ensure that the shock absorbers are installed in the mounting brackets with the "thin" side facing outward.
- d. Rest your 3.5" SATA hard drive in the tray. Connect the ToughTech's data and power cables to the corresponding receptacles on the hard drive.
- e. Insert and tighten each of the four drive screws. (The drive screws are much larger than the panel screws). Make sure that the holes in the shock absorbers line up with the screw holes on the sides of the drive. The shock absorbers will compress slightly, but **do not over tighten the screws.**

- f. Align the edges of the hard drive platform with the internal rails of the outer housing, and carefully slide the platform into the enclosure.
- g. Fasten the rear panel to the enclosure housing by replacing the screws removed in Step a.

- c. Locate the WriteLock disable button on the inside of the rear panel (circled in red in the picture to the right).
- d. Press and hold the WriteLock disable button while switching the power back on. The WriteLock LED on the rear panel will turn off. (In "Secure" models, the key must be inserted for the LED to light.) The unit is now in read/write mode.



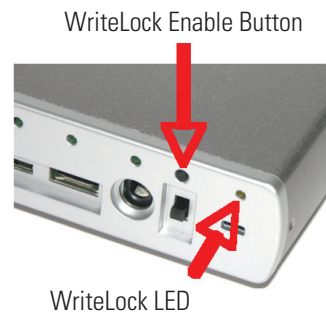
## 2. Operating Your ToughTech Q

### 2.1 Connecting the ToughTech to a Computer

- a. Plug the USB, FireWire, or eSATA cable into the corresponding port on ToughTech.
- b. Plug the other end of the data cable to an available port on your computer.
- c. Turn on the power switch; ensure that the green power LED indicator is active. The power LED will blink whenever the drive is accessed.
- d. Connect the AC power adapter to the rear of the ToughTech. Plug the other end into a grounded electrical outlet.
- e. (For the "Secure" model only) Insert the encryption key into the slot on the front of the product. The green encryption LED will light indicating that the drive is now unlocked. If you do not plug in the key, your computer will not see the drive and the red encryption LED will remain lit while the ToughTech waits for a key. After the drive mounts to the computer, you may unplug the key. It will not be needed again until you cycle power on the ToughTech.

### 2.2 Enabling Write Protection (models with WriteLock only)

- a. Turn the power off using the power switch.
- b. Press and hold the WriteLock enable button while switching the power back on. The yellow WriteLock LED will turn on. (With "Secure" models, the encryption key must be inserted for the LED to light.) The unit is now in write-protect mode.



### 2.3 Disabling Write Protection (models with WriteLock only)

- a. Switch the power off.
- b. Slide the bottom panel out of the housing.

## 3. Technical Specifications

Product Name	ToughTech Q [with WriteLock] ToughTech Secure Q [with WriteLock]
Interface Types & Speeds	<ul style="list-style-type: none"> <li>• eSATA: up to 3000 Mbps</li> <li>• Dual FireWire 800 (400 compatible): up to 800 Mbps</li> <li>• USB 2.0: up to 480 Mbps</li> </ul>
Chipset	Oxford 934
Drive Compatibility	3.5" SATA hard drives
Encryption	Hardware-based AES 128-bit or 256-bit encryption engine ("Secure" models only)
Kensington Lock Slot	Yes
Operating System Requirements	<ul style="list-style-type: none"> <li>• Windows 7, Vista, or XP</li> <li>• Mac OS X</li> <li>• Linux distributions that support the connection type used</li> </ul>
External Power Supply	100-240VAC +12V / 3A (included)
Compliance	FCC, CE, RoHS
Shipping Weight	4 pounds without drive; 6 pounds with drive
Product Dimensions	9.0" x 5.25" x 1.5" (229mm x 133mm x 38mm)
Support	We don't want anything to go wrong with your product. But if it does, Tech Support is standing by and ready to help. Contact us at <a href="http://cru-dataport.com/support">cru-dataport.com/support</a> or <a href="mailto:wiebetech.com/techsupport">wiebetech.com/techsupport</a> . Phone support also available at (800) 260-9800. WiebeTech is a brand of CRU.