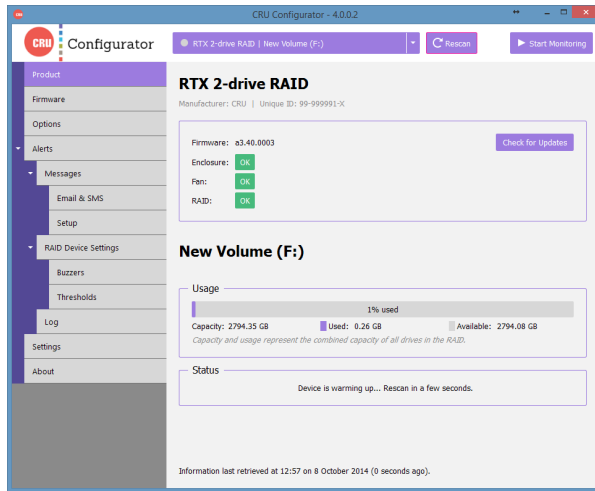




Protecting Your Digital Assets™



CRU® Configurator

User Manual for Windows

Features

- Easily configure CRU storage devices
- Receive email and SMS text notifications when warning or alarm events occur.
- View and update the firmware of select CRU storage devices.
- Customize temperature warning and alarm thresholds for CRU RAID enclosures and drives.
- Control which warning and alarm events cause a CRU RAID device's audible buzzer to sound.





TABLE OF CONTENTS

1 Installing Configurator	2
2 Using Configurator	2
2.1 Configurator Bar	2
2.2 Product Tab	2
2.3 Firmware Tab	2
2.4 Options Tab	3
2.5 Alerts	4
2.5.1 Messages	4
Email & SMS Tab	4
Setup Tab	4
2.5.2 RAID Device Settings	5
Buzzers Tab	5
Thresholds Tab	5
2.5.3 Log Tab	5
2.6 Settings Tab	5
2.7 About Tab	6
3 System Requirements and Supported Hardware	7

1 INSTALLING CONFIGURATOR

Download the CRU Configurator software from the Configurator download page: www.cru-inc.com/support/software-downloads/configurator-software-download/

Run the setup file and follow the prompts to install the software.

2 USING CONFIGURATOR

2.1 CONFIGURATOR BAR

The Configurator Bar allows you to select between multiple CRU devices that are connected to the computer at the same time. To select a product and configure it, ensure that your CRU device is connected to the computer. If the product is not visible in the drop-down box, click the **Rescan button** to detect it. Then click on the drop-down box and choose the product.

The “Start Monitoring” button enables Configurator’s monitoring function, which will send you email or SMS/Text alerts when a problem with your device is detected. To use this feature, you must set up an email account in Configurator. See Section 2.5.1.

2.2 PRODUCT TAB

The Product Tab lists status information about the selected device. Depending on whether drives are inserted and the connection type used to attach the device to the computer, the Product tab can display the firmware version and the status of the enclosure, fans inside the enclosure, and the RAID (if there is a RAID present). The Product tab also shows you volume information of any hard drives inside the device, including the amount of used storage space and individual drive temperature.

2.3 FIRMWARE TAB

The Firmware Tab allows you to update the firmware for the selected device.

NOTE Before you can update the device’s firmware, you must remove any drives inserted into your CRU device and connect the device to your computer with a USB 2.0 cable. **Always power off your device before removing drives!**

Click **Check for Updates** to begin the process. If no update is found, the “Status” section will read “Firmware is up to date.”



If an update is found, an Update section will appear on the screen. Click **Update Device Firmware**. Configurator will download the updated firmware and apply it to the connected device.

2.4 OPTIONS TAB

The Options Tab allows you to modify the following configuration options for the selected device. When you are finished modifying the options, click **Save to Device** to save them.

NOTE Before you can modify the following configuration options, you must remove any drives inserted into your CRU device and connect the device to your computer with a USB 2.0 cable. **Always power off your device before removing drives!**

NOTE If you are using Windows XP or an earlier version of Windows and you wish to use drives with capacities larger than 2.2 terabytes, then you will need to disable "Support drives with capacities larger than 2.2 terabytes".

Configuration

Place or remove a check in the box next to each option to enable it. Remove a check from the box to disable the option.

- **Enable 3 gigabit data throughput** - Enabled by default. Allows the product to run at 3 Gbps SATA Revision 2.0 speed.
- **Support drives with capacities larger than 2.2 terabytes** - Enabled by default. Allows operating systems to use the full capacity of drives larger than 2.2 terabytes on modern operating systems. Uncheck this option to allow obsolete operating systems like Windows XP to detect the drives larger than 2.2 terabytes. Usable drive capacity will then be limited to a maximum of 2.2 terabytes.
- **Disable cache flushing** - Forces the operating system to store read or written data in the drive cache, which may sometimes result in faster data read speeds, but may cause data loss if the device loses power. This setting should only be enabled by advanced users.

PIN

This feature allows you to set a four-digit PIN number to prevent unauthorized RAID configuration of any CRU QR or 3QR RAID device. The front panel interface will require you to enter the PIN number when you attempt to configure the RAID type using the front panel. Setting the PIN to **0000** disables the option.

FireWire Chip ID

This eight-digit number indicates the FireWire chip ID that the device uses to connect to the computer via a FireWire cable. Each FireWire device connected to a computer should have a unique ID number to avoid conflicts. If multiple connected devices are using the same ID number, only one can be recognized by the computer at a time. This option allows you to correct such conflicts.

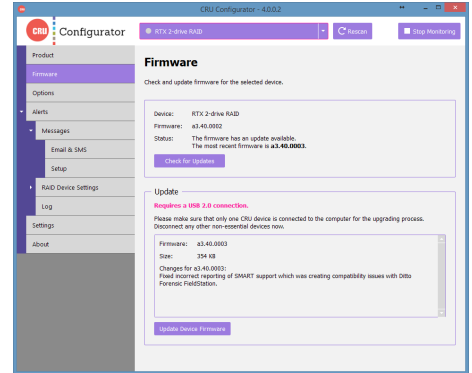


Figure 1. The Firmware Tab.

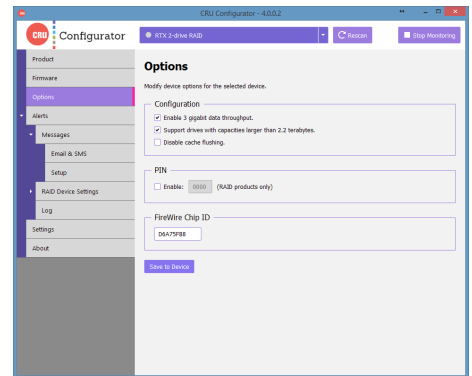


Figure 2. The Options Tab.



2.5 ALERTS

The Alerts Section allows you to set up Configurator’s monitoring function. To enable this function, click the **Start Monitoring button** on the Configurator Bar at the top of the Configurator window.

2.5.1 Messages

Email & SMS Tab

The Email & SMS Tab allows you to select which of the following warnings and alarm notifications you wish to receive when such events occur. You must connect an email account in order to receive notifications via email or text, because the SMS notification services provided by the mobile carriers are email-based. If you haven’t already done so, click on the **Setup Tab** to connect an email account.

Supported SMS carriers are Alltel, AT&T, Boost Mobile, Cingular, Cricket, Sprint, T-Mobile, US Cellular, Verizon, and Virgin Mobile.

Place a check in the box next to the type of event in order to receive a notification when it occurs:

- **System Warning:** A drive exceeds the warning temperature threshold.
- **System Alarm:** The drive and/or enclosure exceeds its alarm temperature threshold or the device fan fails.
- **RAID Warning:** The RAID is degraded or rebuilding.
- **RAID Alarm:** The RAID is invalid or has failed.

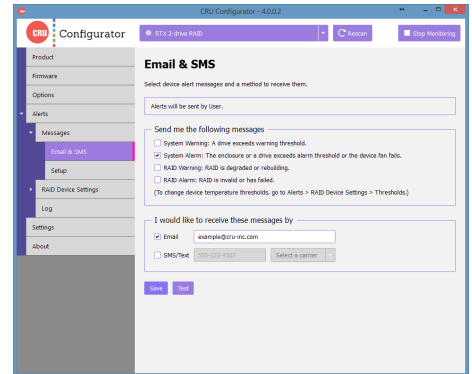


Figure 3. The Email & SMS Tab.



To change the temperature thresholds, go to Alerts → RAID Device Settings → Thresholds (see Section 2.5.2).

Once you have selected your warning and alarm messages, the options inside the bottom box will become selectable, allowing you to choose how you’d like to receive notifications.

Check the box next to “Email” and enter your email address to have messages sent to that email address.

Check the box next to “SMS/Text” and then enter your phone number and your phone’s carrier to have messages texted to you. Your carrier’s rates will apply to each message sent.

Setup

The Setup Tab allows you to connect an email account that Configurator can use to send notifications when warning or alarm events occur. Contact your IT administrator to connect an email address or to get the proper SMTP settings for your account.

Once you have entered the settings, click the **Test button** to send a test message. Click the **Save button** to save these settings.



If you have two-step verification enabled on your mail account, you must log into the account and generate an app-specific password for use with Configurator. Your account password will not work.

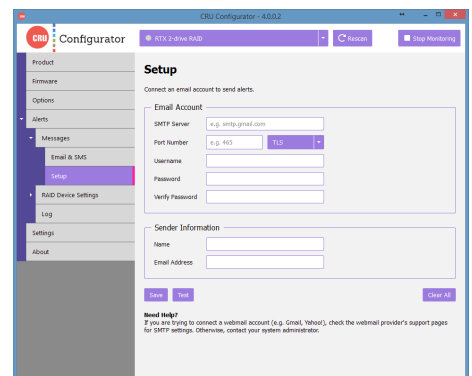


Figure 4. The Setup Tab.



NOTE If you are using a Gmail email address without two-step verification enabled, Google will automatically block sign-in attempts from non-Google applications because they are not part of the Google ecosystem, and therefore characterizes these applications as 'less secure'. Log in to your Google account via a web browser and navigate to <https://www.google.com/settings/security/lesssecure-apps>, and then under "Access for less secure apps" choose **Enable**. Then click the **Done** button to save your settings.

2.5.2 RAID Device Settings

This section allows you to modify and customize all alarms and temperature thresholds that are measurable in all CRU QR and 3QR RAID devices.

NOTE Before you can modify the RAID Device Settings, you must remove any drives inserted into your CRU device and connect the device to your computer with a USB 2.0 cable. **Always power off your device before removing drives!**

Buzzers Tab

The Buzzers Tab allows you to enable or disable audible buzzers on the device. Place a check in the box next to the type of event in order to trigger the audible buzzer when it occurs:

- **System Warning:** A drive exceeds the warning temperature threshold.
- **System Alarm:** The drive and/or enclosure exceeds its alarm temperature threshold or the device fan fails.
- **RAID Warning:** The RAID is degraded or rebuilding.
- **RAID Alarm:** The RAID is invalid or has failed.

Thresholds

The Thresholds Tab allows you to modify the temperature thresholds for the enclosure alarm, drive warning, and drive alarms. You can also modify the temperature at which the fan turns on.

2.5.3 Log Tab

The Log Tab creates a record of each event that has been triggered. Click the **Reset** button to clear all active alerts and alert history.

2.6 SETTINGS TAB

The Settings Tab allows you to modify how Configurator behaves. When finished, click **Save** to save the settings. Click the **Use Defaults** button to reload the default settings.

Device Detection

By default, only CRU devices are shown in the drop-down box on the Configurator Bar. Remove the checkbox to show all storage devices that are directly connected to your computer.

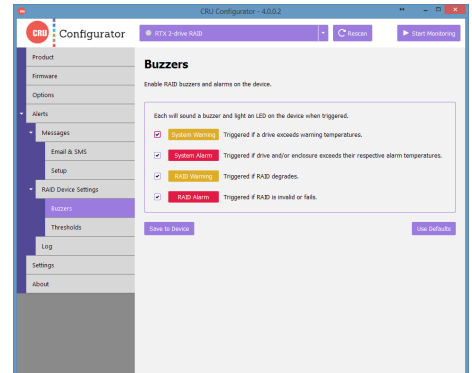


Figure 5. The Buzzers Tab.

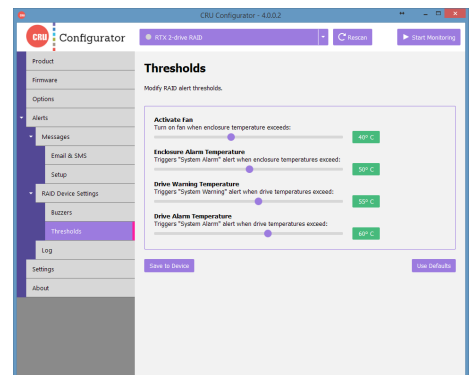


Figure 6. The Thresholds Tab.

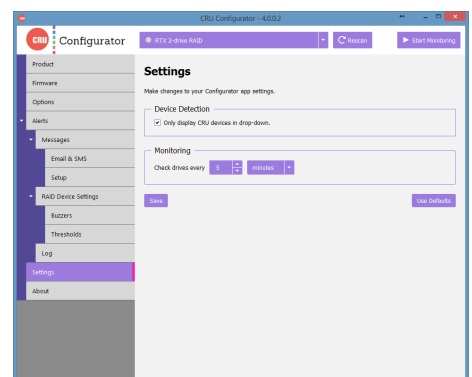


Figure 7. The Settings Tab.



Monitoring

Here you can specify the interval at which Configurator will check the status of all CRU devices and drives connected to the computer.

2.7 ABOUT TAB

The About Tab lets you view which version of Configurator you are running, visit CRU's website, and email our Tech Support or Sales teams if you need help using Configurator or any CRU product.

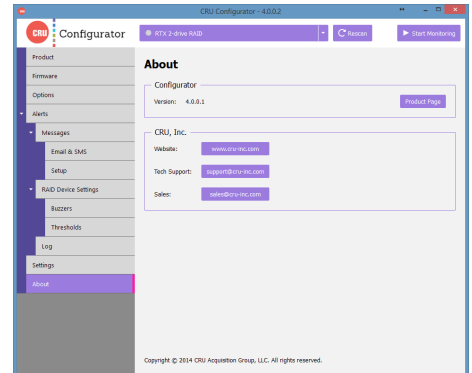


Figure 8. The About Tab.

3 SYSTEM REQUIREMENTS AND SUPPORTED HARDWARE

Product Name	CRU Configurator
Supported Operating Systems	<ul style="list-style-type: none"> Windows 8.1, 8, 7, Vista, and XP Windows Server 2012, 2008, and 2003 product families Mac OS X 10.5.x or newer
Supported CRU Products	Drive eRazer Ultra, all Forensic RTX 3QJ models, all Forensic RTX QJ models, Forensic ComboDock v5, Forensic LabDock v5, Forensic UltraDock v4, Forensic UltraDock v5, all RAX 3Q models, all RAX 3QJ models, all RAX 3QJp models, all RAX 3QR models, all RAX QJ models, all RAX QR models, RTX400-QR, RTX410-3QJ, RTX430-3QR, all RTX 2-bay QJ models, RTX Secure 410-3QR, all ToughTech Duo models, all ToughTech mini-Q models, all ToughTech Q models, ToughTech Secure m3, all ToughTech Secure mini-Q models, all ToughTech Secure Q models, UltraDock v5
Technical Support	Your investment in CRU products is backed up by our free technical support for the lifetime of the product. Contact us through our website, www.cru-inc.com/support or call us at 1-800-260-9800 or +1-360-816-1800.

©2014 CRU Acquisition Group, LLC. ALL RIGHTS RESERVED.

This User Manual contains proprietary content of CRU Acquisition Group, LLC ("CRU") which is protected by copyright, trademark, and other intellectual property rights.

Use of this User Manual is governed by a license granted exclusively by CRU (the "User Manual License"). Thus, except as otherwise expressly permitted by that User Manual License, no part of this User Manual may be reproduced (by photocopying or otherwise), transmitted, stored (in a database, retrieval system, or otherwise), or otherwise used through any means without the prior express written permission of CRU.

Use of the full CRU Configurator product is subject to all of the terms and conditions of this User Manual and the above referenced User Manual License.

CRU® is a trademark owned by CRU and is protected under trademark law. This User Manual does not grant any user of this document any right to use any of the Trademarks.

End User License Agreement

This License Agreement (the "License") is a binding agreement between you (either an individual or an entity) and CRU Acquisitions Group, LLC ("CRU") that specifies approved usage of this software product (the "Software"). By clicking "Accept" below, you indicate your full agreement with the following provisions.

1. This computer Software product and all accompanying documentation are copyright © 2014 CRU Acquisitions Group, LLC. Unauthorized duplication or alteration is prohibited. You may not decompile, disassemble, or reverse engineer the Software. CRU retains all rights to ownership of this Software including all applicable rights in patents, trademarks, copyrights, and trade secrets contained therein.
2. Unless specifically approved in writing by an authorized CRU representative, you may not distribute or make available this software to any third party. Any unauthorized copying, alteration, or distribution of the Software, written materials, or other materials accompanying the Software may be criminal and/or civil offenses for which you may be liable for fines, damages, and legal fees.
3. The Software is provided "as is" by CRU. No warranties either express or implied are offered by CRU to the extent allowed by law.
4. You retain full control over the use of the Software and you assume all risks and liability for results obtained by the use of the Software. CRU SHALL HAVE NO LIABILITY OR RESPONSIBILITY TO YOU OR ANY OTHER PERSON OR ENTITY WITH RESPECT TO ANY LIABILITY, LOSS OR DAMAGE CAUSED DIRECTLY OR INDIRECTLY BY USE OR PERFORMANCE OF THE SOFTWARE PRODUCT OR ARISING OUT OF ANY BREACH OF THIS LICENSE, INCLUDING, BUT NOT LIMITED TO, ANY DAMAGES RESULTING FROM LOST OR CORRUPTED DATA, INCONVENIENCE, LOSS OF TIME, PROPERTY, REVENUE, OR PROFIT OR ANY INDIRECT, SPECIAL, INCIDENTAL, OR CONSEQUENTIAL DAMAGES, EVEN IF CRU HAS BEEN ADVISED OF THE POSSIBILITY OF SUCH DAMAGES.
5. Your right to use this product may not be transferred. You shall not assign or sublicense your rights or obligations under this License.
6. The term of this license agreement extends from the moment of your acceptance until you such time as you uninstall the Software product. However, failure to comply with the conditions of this License may result in termination of the License by CRU at any time. In such an event, you shall immediately uninstall the Software. The provisions of this License that protect the proprietary rights of CRU shall continue in force after termination of the License.
7. This License constitutes the entire agreement between CRU and you relative to this License. Any change hereto shall be effective only if in writing and signed by both you and a duly authorized agent of CRU.
8. If any portions of this License are held to be invalid, void, or unenforceable, the remaining provisions of this License shall remain in full force and effect and shall in no way be affected, impaired, or invalidated.
9. This License agreement is governed by the laws of the state of Washington.



Protecting Your Digital Assets™

For more information,
visit the CRU web site.

www.cru-inc.com